

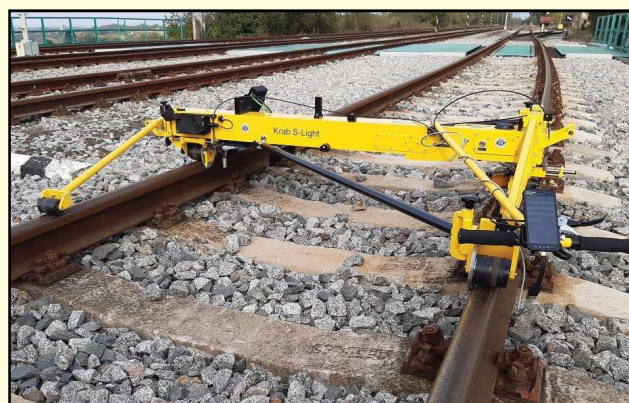


ASI

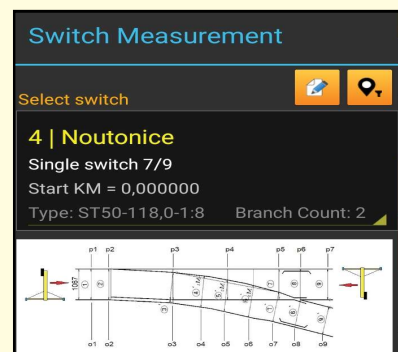
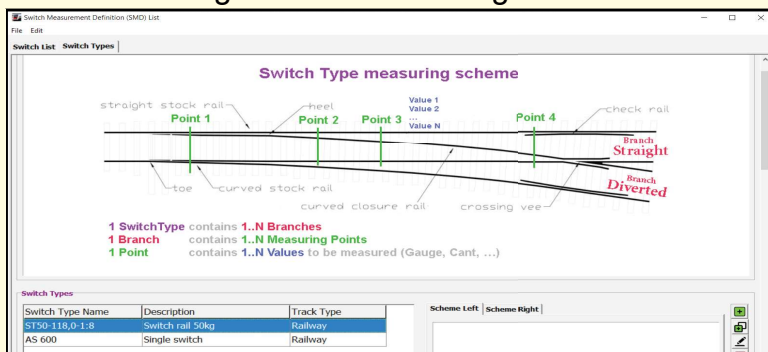
Automatic switch inspection

Automatic switch inspection (ASI) is a system created for complex switch measurement, which is made automatically. This means no stopping during the measurement is required. The system is designed for KRAB measuring trolley and it is set up, used and evaluated using KrabDroid 2.0 and Krab 10 softwares provided along with the trolley.

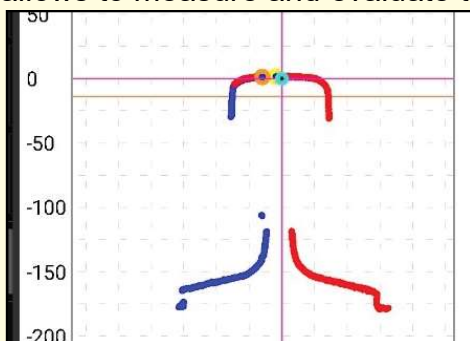
The system allows to create a database of several switch types. The database of switches can be as big as needed. Once the database is made in the office - in the Krab 10 software - it is loaded into the smartphone/tablet used for measurement and then any of the switch saved in the database can be measured. The system is very variable. There is a possibility to specify any type of the switch, its branches, orientation, the number of points in which the data are collected and several different



Also, the switches which are not saved in the database can be measured and all required information can be added right in the track using KrabDroid 2.0 software.



All the data gained by ASI are stored in the same file as GPK data and are evaluated in the Krab 10 software. There is a table with all values measured for each point separately. The ASI system also allows to measure and evaluate the Rail Profiles and to view the profile in a form of a graph.



Name	Meas. Value	Nominal Value [mm]	Limit MIN [mm]	Limit MAX [mm]
pd)	1437.30	1435.00	0.00	0.00
horizontal Alignment)	2.20	0.00	0.00	0.00
alignment)		0.00	0.00	0.00



Manufacturer:

Komerční železniční výzkum, spol. s r.o.
 U Kaplický 1199, PRAGUE 6, CZ-165 00
 tel./fax.: +420 233 920 185
 cell.: +420 602 251 356
 e-mail: jtunek@kzv.cz, web: www.kzv.cz